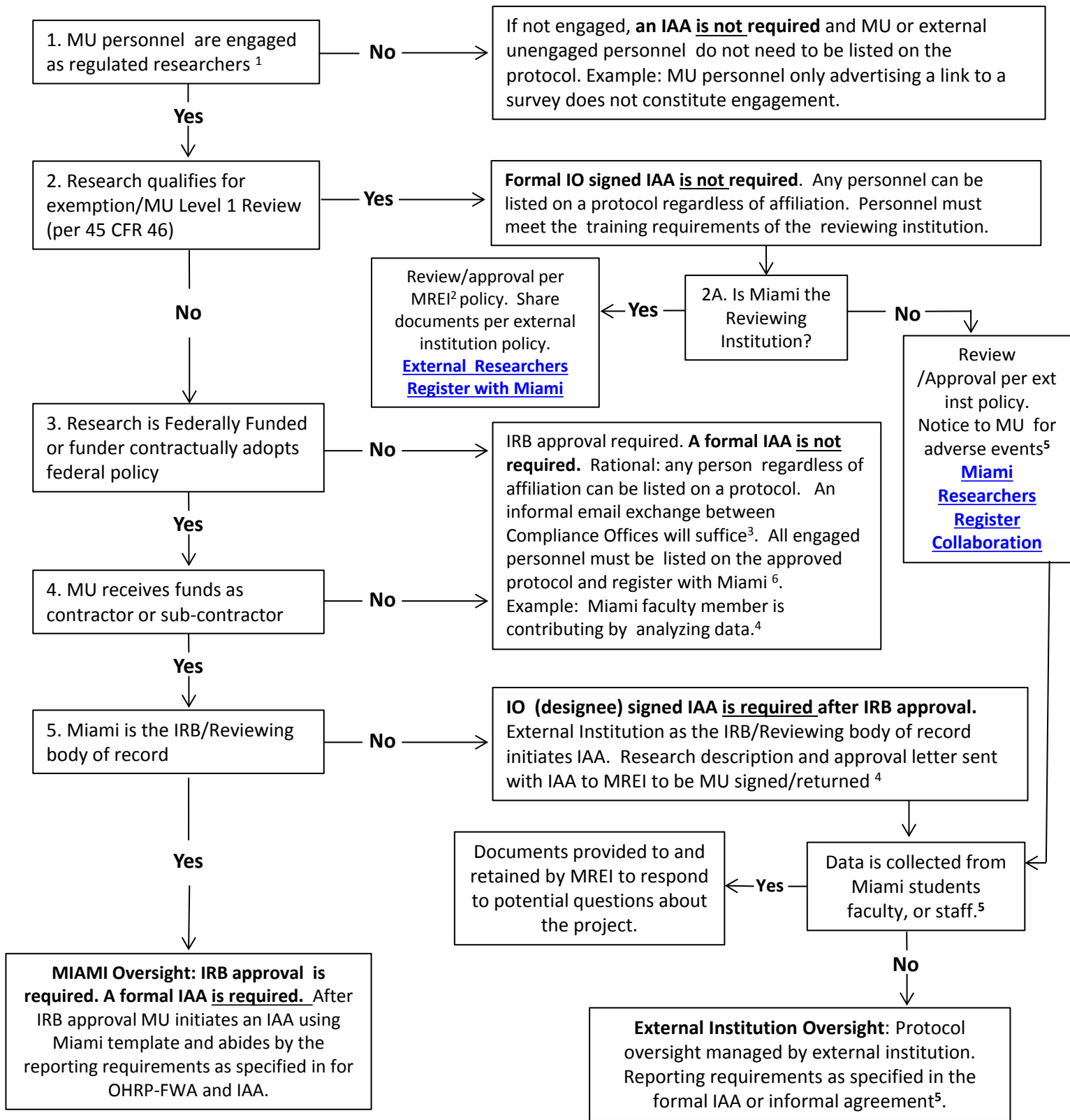


# Miami Inter-institutional Collaboration Decision Tree

(assuming HS research per regulatory definition)



1. Engagement: obtaining consent, directly collecting data from subjects, or having access to data with identifiers
2. MREI: Miami Research Ethics and Integrity Office
3. When a formal IAA is not required, references to OHRP reporting should be minimal and be limited to programmatic deficiencies versus specific project deficiencies
4. In rare cases the MREI/IO, after reviewing external protocols, may determine that the Miami component of the research should be separated from the external institutions activities and reviewed/approved by Miami, e.g. the contribution of Miami staff is to conduct a low risk survey of patient families regarding a pediatric clinical research project where the clinical treatment involves more than minimal risk.
5. Recall: if Miami personnel are not engaged, MREI approval is not required for external researchers to contact Miami personnel and external researchers cannot imply MREI or MU-IRB approval in recruiting materials unless formally reviewed and approved by Miami.
6. [External Researchers Register with Miami](#) or [Miami researchers register their collaboration with another institution](#) (login required)